

DIWALI HOLIDAY ASSIGNMENT

Class - X

English:

Unseen passage

Read the passage and answer the questions

Tourism, for millennia, has been a perpetual industry. Though initially unorganised and highly chaotic, it retained a place in each nook of history. The present tourism scenario in India is on the rise, with destinations grabbing eyeballs globally and domestically. Being the youngest nation in the world, it's no wonder that the aggregate of 'millennials' spends more time and money on travel than previous generations. This could be huge for the economy of various states that rely majorly on tourism, if only it were sustainable.

2. Unsustainability prevails throughout the country, in states with higher domestic tourist inflow than foreign. The Dev Bhoomi is a prime example. No matter how popular, Uttarakhand tourism is loop-holed through and through.

3. Approx. 80% of tourists arrive to complete the infrastructure of the Dham Yatra. Such unchecked tourism puts immense pressure on natural and infrastructure facilities. The extreme shortage of accommodation in correspondence with thriving footfalls has led to the construction of illegal buildings the majority of which exist on riverbanks. With an increasing number of tourists coming in through private vehicles to save 'transportation money', pollution levels are rising, increasing temperatures in return. With unlawful construction and pollution on riverbanks, the Ganges could cause direct harm to local species in Rishikesh and Haridwar.

4. Around 10,000 hilly areas are being convened for the construction of roads alone. We know roads are basic infrastructure but the Forest Conservation Act requires a project developer to plant trees in a non-forest/degraded forest area equal to or twice the trees, it's clearing respectively, to compensate which does not happen.

5. The India State of Forest Report illustrates how Uttarakhand is losing its forest cover, which has indirect development through tourism, at its core. The government and private tour operators may think they can deny allegations but the charts speak for themselves.

6. We, as consumers of the tourism industry, hold the power to cause a massive stir in this context. According to research conducted, Uttarakhand's mass tourism comprises people between 25-35 years of age, with higher education, out with either family or friends and enough average income to contribute to the local economy.

7. Regardless of what the figures say, if we look forward to sustainable tourism being the target market, it leaves little choice to the rest of the hierarchy. Consciously making efforts to be responsible tourists and thinking of how to provide for the local community/environment in a way

- tiny or big, could act as a catalyst in obliterating this ruckus due to ignorance. After all, there can only ever be seven deadly sins and wanderlust isn't one of them.

Based on your understanding, answer any ten of the following questions.

1. Infer one consequence, based on your understanding of the passage, that highlights the result of the pressures of a large number of tourists.

2. Select the appropriate option to fill in the blank.

From Paragraph 1, we can infer _____ is the main cause for putting pressure on infrastructural and natural resources.

1. unchecked tourism
2. illegal construction
3. pollution
4. increasing temperatures
5. deforestation Codes

Codes

- (a) 1, 2 and 3
- (b) 2 and 3
- (c) Only 1
- (d) 2 and 4

3. Complete the following analogy correctly with a word/phrase from paragraph 6.

Movie: Viewers :: Product: _____

4. Select the correct option to complete the following sentence. The Forest Conservation Act vouches for

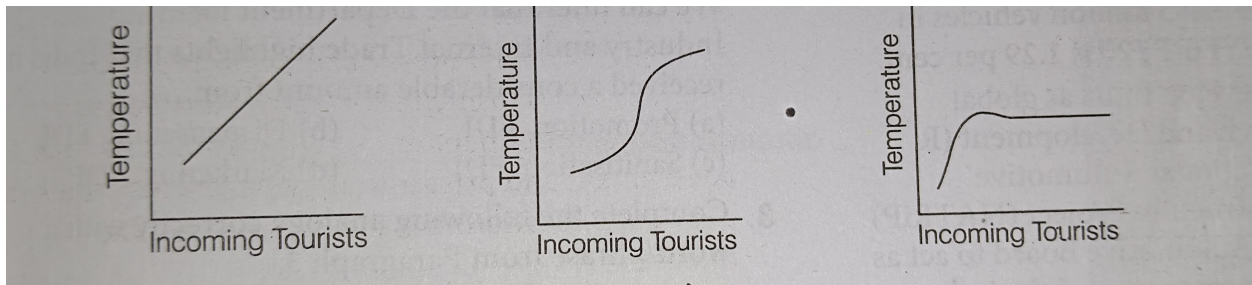
- (a) the preservation of local species of flora and fauna
- (b) plantation of trees in a non-forest/degraded forest area equal to or twice the trees it's clearing
- (c) construction only in the non-forest or degraded forest area
- (d) All of the above

5. According to the passage, select the chart that is the correct depiction of the relation between incoming tourists and the temperature of the region.

(a) Option 1

(b) Option 2

(d) None of these



6. Fill in the blank by selecting the correct option.

The unchecked tourism in Uttarakhand over the last few years has showed _____ effects on the environment and infrastructure of the place.

(a) positive

(b) beneficial

(c) detrimental

(d) encouraging

7. Substitute the word 'illegal' with ONE WORD similar in meaning, in the following sentence from Paragraph 3.

The extreme shortage of accommodation in correspondence with thriving footfalls has led to the construction of ILLEGAL buildings, the majority of which exist on riverbanks.

8. List any two reasons to explain why unsustainability prevails in the Dev Bhoomi.

1. _____

2. _____

9. What does the tourist statistics show in the region of Uttarakhand?

10. Based on your understanding of the passage, choose the option that lists the result of the pressures of a large number of tourists.

(a) Illegal infrastructural constructions

(b) Higher education

Rise in pollution

Deforestation

(c) Higher education

(d) Higher education

Rise in pollution

Increase in local economy

11. Choose the word opposite in meaning to the word 'domestic'.

(a) Native

(b) Indigenous

(c) Aboriginal

(d) Foreigner

12. Fill in the blank.

According to the ISF Report, the State of _____ is losing its forest cover.

Maths:

Chapter- 9 Ex.- 9.1 (Q.1 to Q.14)

Chapter- 10 Ex.- 10.2 (Q.1 to Q.13)

Chapter- 7 Ex.- 7.1 (Q.1 to Q.8)

Hindi :

1. पेज नं. 52, 53 अपठित गद्यांश कीजिए।

2. 'बहेलिये का निराश होकर वापस जाना' लघु कथा लिखिए।

3. आप सभी साइकिल बेचना चाहते हैं।, उससे संबंधित विज्ञापन तैयार कीजिए।

S.Sc :

Revise and prepare pre board portion for the pre board.

Science :

Prepare a brief write - up for portfolio on any one topic from the choices given below:-

- 1) Sustainable management of natural resources
- b) Forest & wild life resources
- c) Coal & Petroleum
- d) Water Resources & Management